



SCRS/2019/076

# STATISTICS OF THE SPANISH PURSE SEINERS and Bait Boat\_2018

ATLANTIC OCEAN



Pedro Pascual, Vanessa Rojo, Lourdes Alonso, José C. Báez y Francisco Abascal  
SCRS\_22-26 Madrid 2019)  
YFT Preparatoria data, Tropical Tuna Fisheries

# TABLE OF CONTENTS

*MAIN INFORMATION*

*LANDING BY HARBOUR*

*SPANISH PURSE SEINER VESSELS*

*CATCHES*

*All schools type*

*Log associated schools (FAD)*

*Free swimming schools (FS)*

*SPATIAL DISTRIBUTION*

*MEASURES AND DATA SAMPLING*

*SPANISH BAIT BOAT IN DAKAR*

*CATCHES*

*SPATIAL DISTRIBUTION*

# STATISTICS OF THE SPANISH PURSE SEINERS

FISHING ZONES AND LANDING PORTS (Main information)

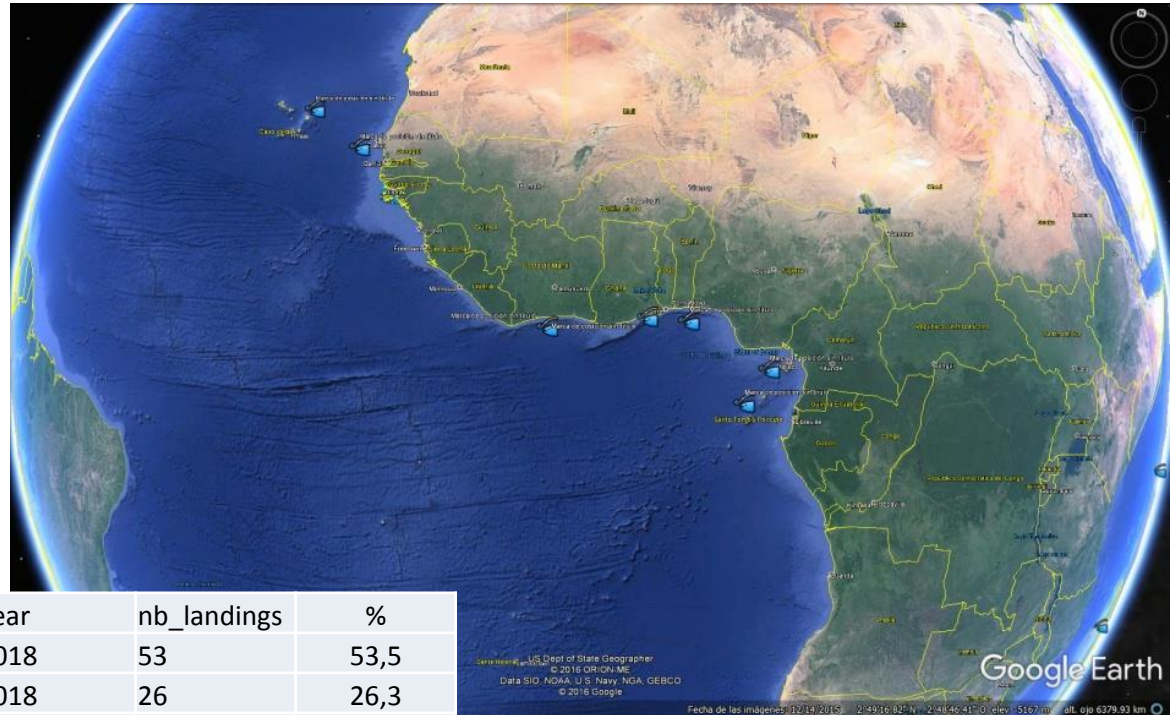


## Fleet

10 vessels and 6 supply, 13.871 tons carrying capacity in 2017

10 vessels and 6 supply, 12667 tons carrying capacity in 2018

## Atlantic Ocean



## Catches

Decrease of 7 % (56.057 t in 2017) in 2018 compared to 2017 (66.108 t in 2017).

YFT: 10.046 t (11.174 t in 2017)

SKJ: 39.915 t (47.336 t in 2017)

BET: 4.925 t (5.761 t in 2017)

## Landing by harbour

ocean	harbour	flag	gear	year	nb_landings	%
Atlantic	ABIDJAN	Espagne	PS	2018	53	53,5
Atlantic	DAKAR	Espagne	PS	2018	26	26,3
Atlantic	MINDELO	Espagne	PS	2018	17	17,2
Atlantic	LA PUEBLA	Espagne	PS	2018	1	1,0
Atlantic	RIBEIRA	Espagne	PS	2018	1	1,0
Atlantic	TEMA	Espagne	PS	2018	1	1,0

ocean	harbour	flag	gear	year	nb_landings	%
Atlantic	DAKAR	Espagne	BB	2017	161	100

*LANDING BY HARBOUR*

---

# STATISTICS OF THE SPANISH PURSE SEINERS

## Landing by harbour and destination in 2018



harbour	flag	gear	year	specie	commercial_category	total_weight
ABIDJAN	Espagne	PS	2017	MIX	Thonidés	34929,179
DAKAR	Espagne	BB	2017	BET	Patudo - 10	531,978
DAKAR	Espagne	BB	2017	BET	Patudo + 10	427,272
DAKAR	Espagne	BB	2017	MIX	Thonidés	111,335
DAKAR	Espagne	BB	2017	SKJ	+3.4 Kg	2404,647
DAKAR	Espagne	BB	2017	SKJ	-1.5 Kg	417,759
DAKAR	Espagne	BB	2017	SKJ	Listao - 1.8	861,259
DAKAR	Espagne	BB	2017	SKJ	Listao + 1.8	3494,045
DAKAR	Espagne	BB	2017	YFT	Albacore +10	672,811
DAKAR	Espagne	BB	2017	YFT	Albacore -10	501,305
DAKAR	Espagne	PS	2017	MIX	Thonidés	15762,263
MINDELO	Espagne	PS	2017	MIX	Thonidés	3458
TEMA	Espagne	PS	2017	MIX	Thonidés	865



harbour	flag	gear	year	total_cannery_market	total_local_market	total_landingd	% Cannery	%Local Marquet
ABIDJAN	Espagne	PS	2017	30752,545	5455,255	36207,8	84,931	15,0665
DAKAR	Espagne	BB	2017	9422,404	612,48	10034,884	93,896	6,1035
DAKAR	Espagne	PS	2017	8710,156	292,005	9002,161	96,756	3,2437
MINDELO	Espagne	PS	2017	914	3	917	99,672	0,3271

## *SPANISH VESSELS*

---

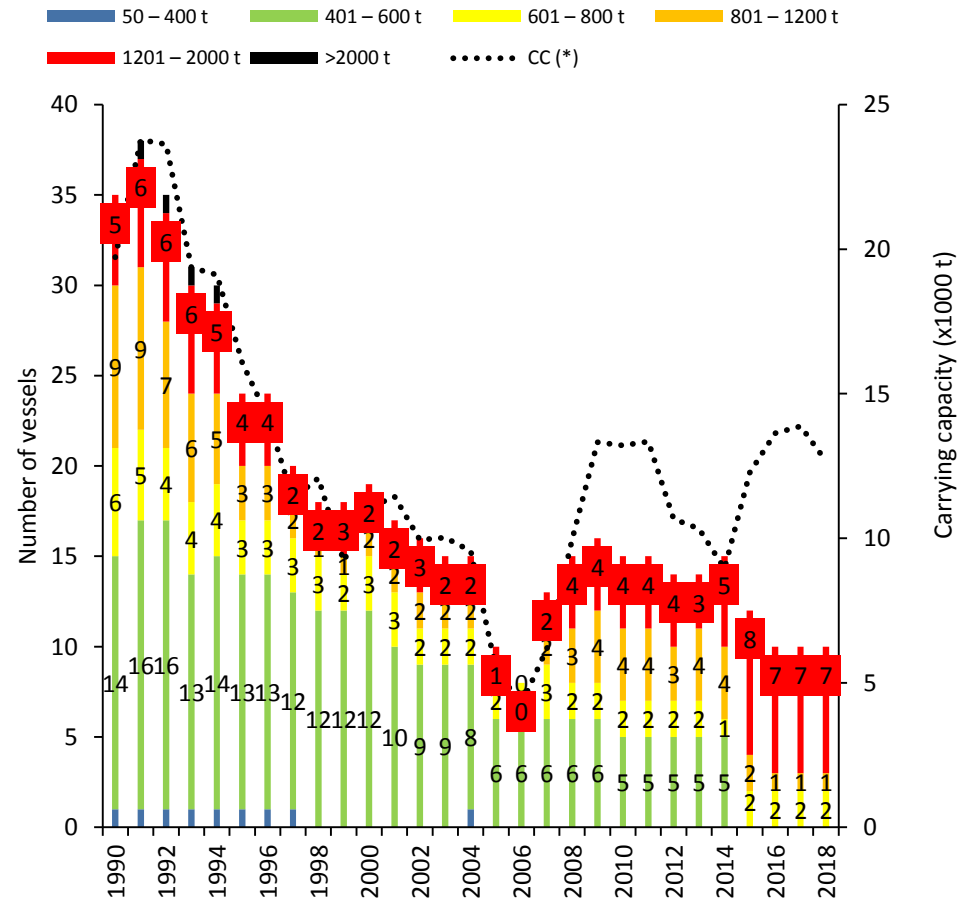


# STATISTICS OF THE SPANISH PURSE SEINERS

Historical purse seine number by size categories and carrying capacity of the Spanish fleet.



Año / Categ.	50 – 400 t	401 – 600 t	601 – 800 t	801 – 1200 t	1201 – 2000 t	>2000 t	N	CC (*)
1990	1	14	6	9	5		35	19717
1991	1	16	5	9	6	1	38	23780
1992	1	16	4	7	6	1	35	23630
1993	1	13	4	6	6	1	31	19371
1994	1	14	4	5	5	1	30	19113
1995	1	13	3	3	4		24	16066
1996	1	13	3	3	4		24	14211
1997	1	12	3	2	2		20	11364
1998		12	3	1	2		18	12082
1999		12	2	1	3		18	9198
2000		12	3	2	2		19	11051
2001		10	3	2	2		17	11442
2002		9	2	2	3		16	9946
2003		9	2	2	2		15	10017
2004	1	8	2	2	2		15	9559
2005		6	2	1	1		10	5460
2006		6	2				8	4258
2007		6	3	2	2		13	6175
2008		6	2	3	4		15	9969
2009		6	2	4	4		16	13326
2010		5	2	4	4		15	13211
2011		5	2	4	4		15	13339
2012		5	2	3	4		14	10665
2013		5	2	4	3		14	10334
2014		5	1	4	5		15	8943
2015			2	2	8		12	12265
2016			2	1	7		10	13631
2017			2	1	7		10	13871
2018			2	1	7		10	12667



*CATCHES*

---



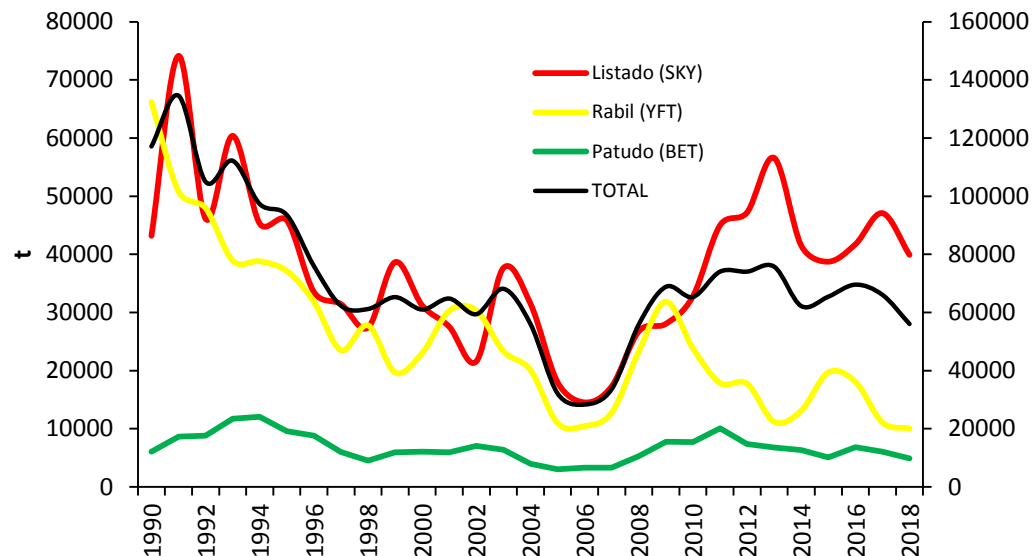
# STATISTICS OF THE SPANISH PURSE SEINERS

## Historical total catch and specific composition % by specie



AÑO	Rabil (YFT)	Listado (SKY)	Patudo (BET)	Otros(LTA, FRI, ALB)	TOTAL
1990	66201	43189	6060	1680	117129
1991	50824	74139	8628	996	134585
1992	47972	46125	8789	2070	104956
1993	38925	60387	11755	1130	112197
1994	38806	45288	12067	1152	97313
1995	37137	45847	9597	945	93526
1996	31845	33527	8813	1805	75990
1997	23510	31449	5979	1397	62334
1998	27778	27414	4534	1469	61195
1999	19670	38664	5923	1028	65284
2000	23033	31209	6043	740	61025
2001	30284	27543	5927	1031	64785
2002	30343	21595	7037	431	59407
2003	23330	37658	6372	784	68144
2004	20086	31514	3943	489	56031
2005	10979	18005	3012	148	32143
2006	10453	14537	3328	16	28334
2007	12766	17292	3310	262	33629
2008	23287	26760	5266	577	55890
2009	31861	28047	7769	1156	68834
2010	23839	32781	7699	1021	65339
2011	17880	44981	10095	1097	74052
2012	17758	47202	7387	1706	74054
2013	11190	56596	6769	1209	75770
2014	13110	41516	6321	1264	62211
2015	19674	38736	5088	1942	65439
2016	18083	41727	6809	2954	69573
2017	11082	47089	6064	1838	66073
2018	10046	39915	4925	1168	56055

### Total Catch



AÑO	Rabil (YFT)	Listado (SKY)	Patudo (BET)	Otros
2012	23,98%	63,74%	9,98%	2,30%
2013	14,77%	74,69%	8,93%	1,60%
2014	21,07%	66,73%	10,16%	2,03%
2015	30,06%	59,19%	7,78%	2,97%
2016	25,99%	59,98%	9,79%	4,25%
2017	16,77%	71,27%	9,18%	2,78%
2018	17,92%	71,21%	8,79%	2,08%

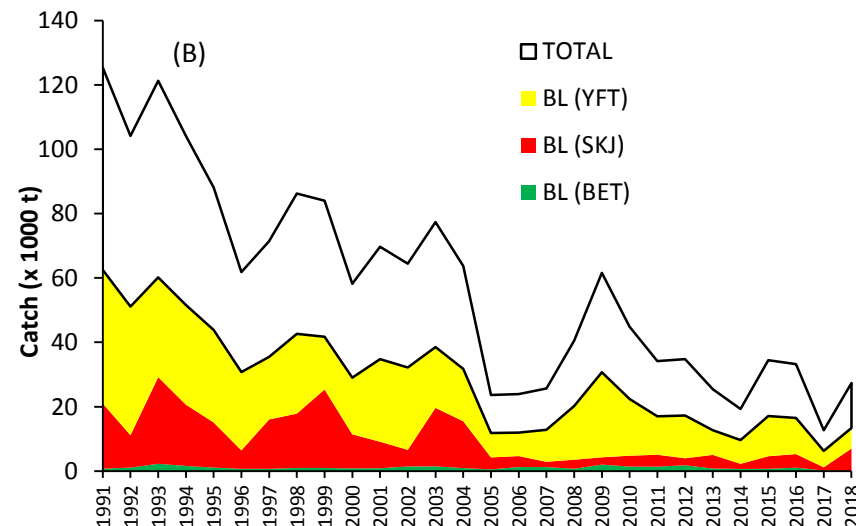
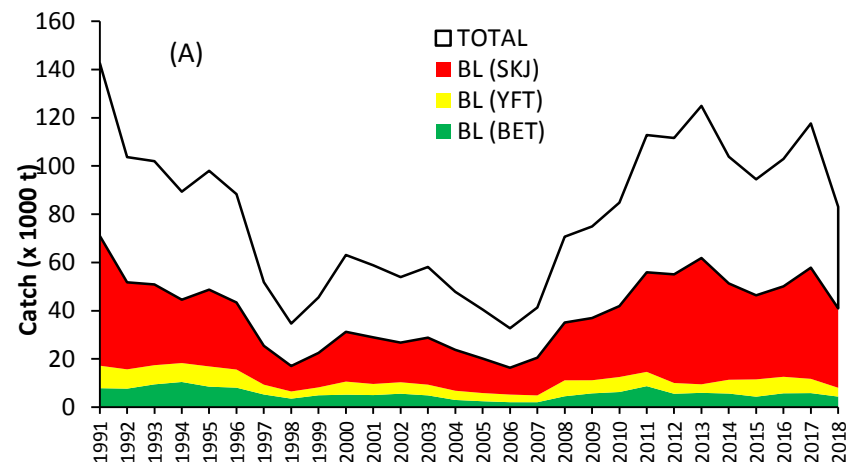
# STATISTICS OF THE SPANISH PURSE SEINERS

## Historical catches by fishing mode and specific composition (%) by types



AÑO	Rabil (YFT)		Listado (SKY)		Patudo (BET)	
	OB (YFT)	BL (YFT)	OB (SKJ)	BL (SKJ)	OB (BET)	BL (BET)
1991	9336	41488	53859	20279	7891	736
1992	8011	39961	36065	10060	7700	1088
1993	7948	30978	33458	26929	9489	2266
1994	7848	30958	26250	19038	10469	1598
1995	8402	28735	31816	14031	8519	1078
1996	7516	24329	27786	5741	8116	697
1997	4076	19434	16106	15343	5280	699
1998	2991	24788	10542	16871	3556	978
1999	3287	16383	14285	24379	4951	971
2000	5429	17603	20625	10584	5210	834
2001	4615	25669	19316	8227	5040	886
2002	4749	25594	16428	5167	5608	1430
2003	4457	18873	19475	18183	4906	1466
2004	3816	16270	16949	14564	3021	922
2005	3404	7575	14290	3715	2481	530
2006	3163	7289	11118	3420	2086	1242
2007	2832	9934	15631	1662	2077	1232
2008	6619	16668	23947	2812	4545	721
2009	5435	26426	25793	2254	5749	2020
2010	6230	17609	29392	3389	6309	1390
2011	5932	11948	41275	3706	8727	1368
2012	4472	13286	45036	2166	5577	1809
2013	3530	7660	52361	4235	5973	796
2014	5734	7376	39918	1597	5666	655
2015	7178	12495	34841	3894	4373	715
2016	6862	11221	37487	4240	5764	1045
2017	5913	5096	46087	969	5856	208
2018	3667	6380	32915	7000	4407	518

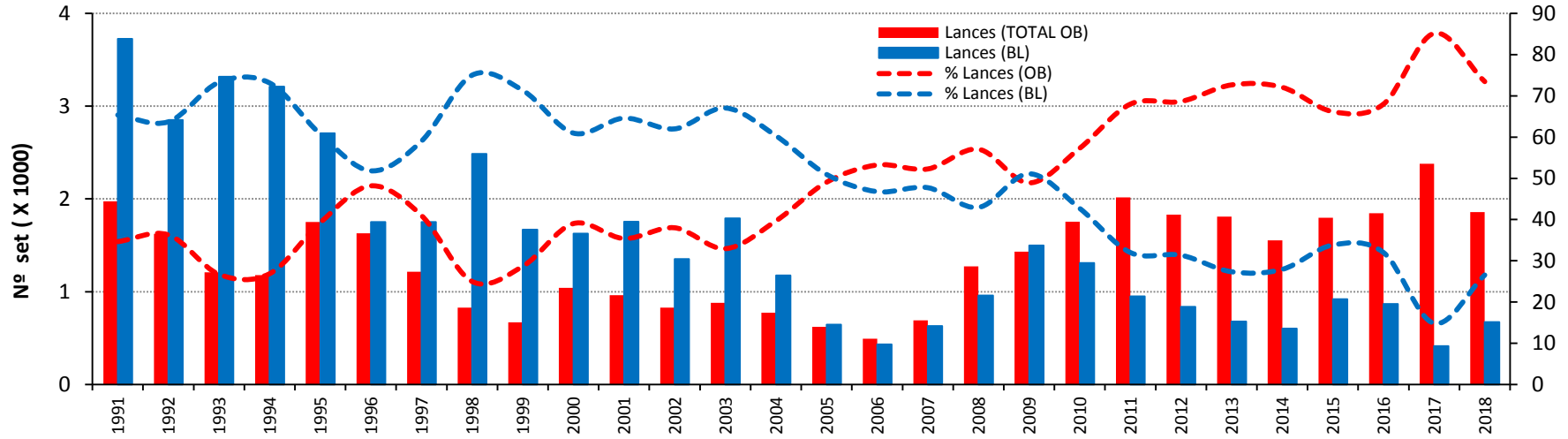
Specific composition (%) by fishing mode



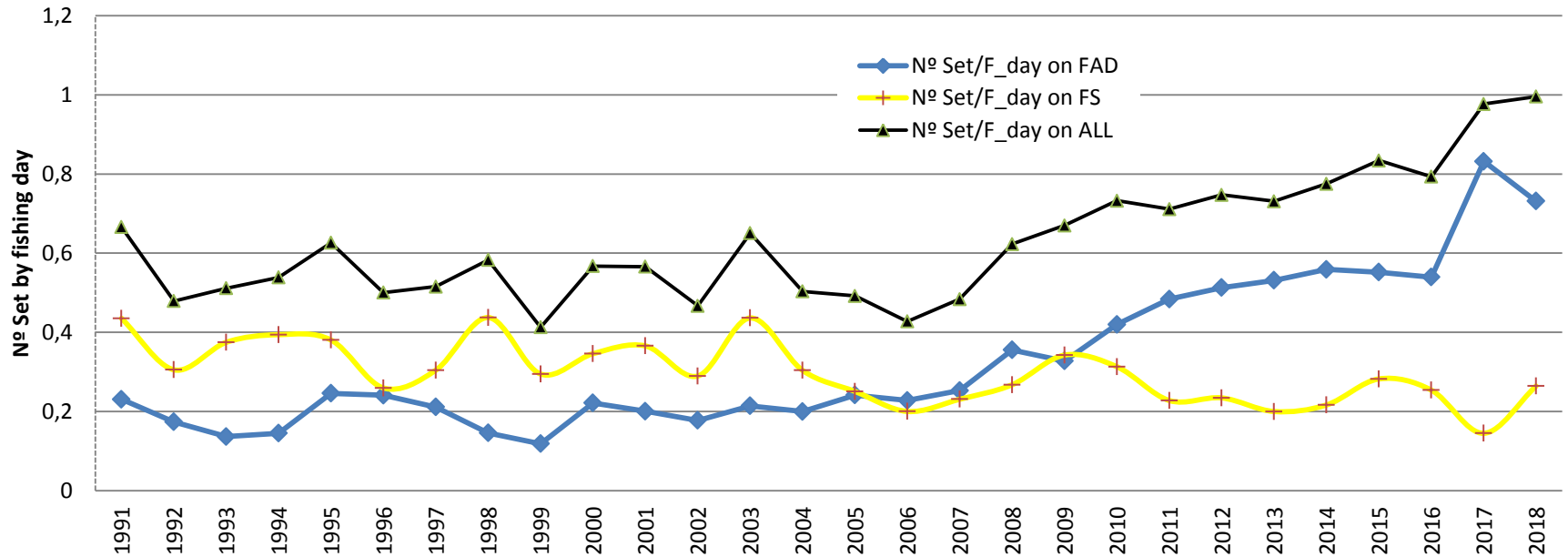
AÑO	OB (YFT)	FS (YFT)	OB (SKJ)	FS (SKJ)	OB (BET)	FS (BET)	OB (Others)	FS (Others)
2016	12,99%	67,13%	70,96%	25,36%	10,91%	6,25%	5,15%	1,26%
2017	9,89%	79,42%	77,10%	15,10%	9,80%	3,24%	3,22%	2,24%
2018	8,71%	45,67%	78,21%	50,10%	10,47%	3,71%	2,60%	0,52%

# STATISTICS OF THE SPANISH PURSE SEINERS

## Number of set and Percentage FAD/FS



### Nº Set by Fishing day and Fishing mode

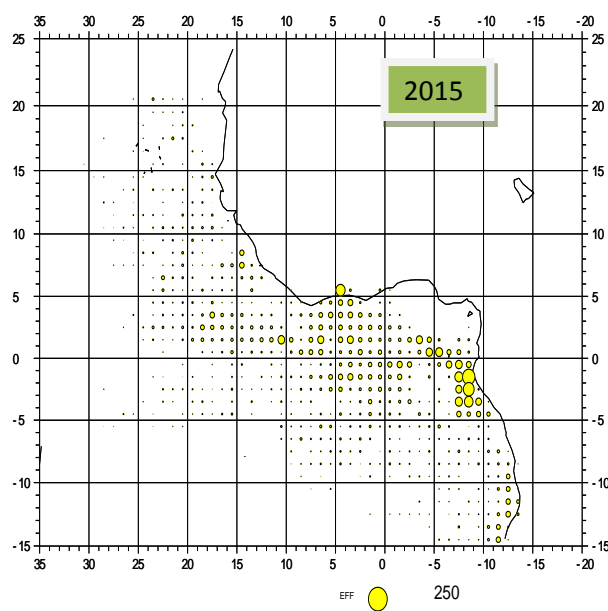


## *SPATIAL DISTRIBUTION*

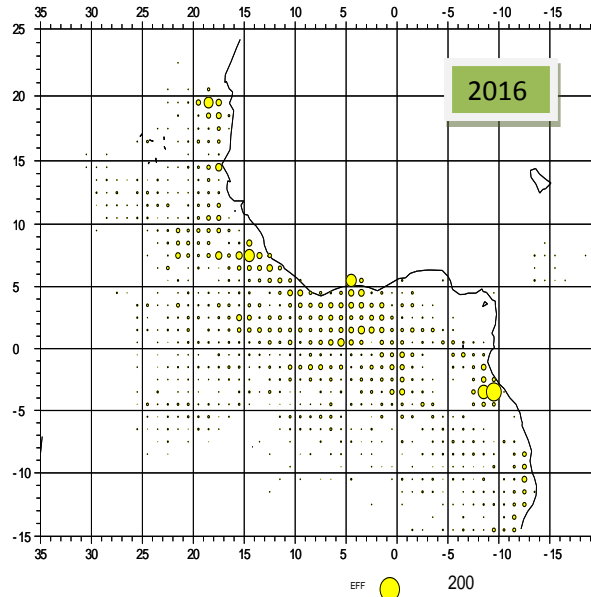
---

# STATISTICS OF THE SPANISH PURSE SEINERS

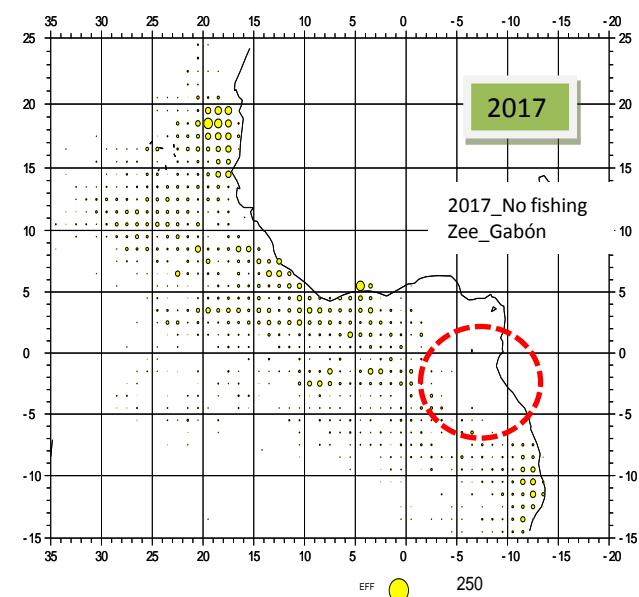
## Spatial Distribution - fishing effort in 2015/16/17/18



Efforts jmer AEPST111515

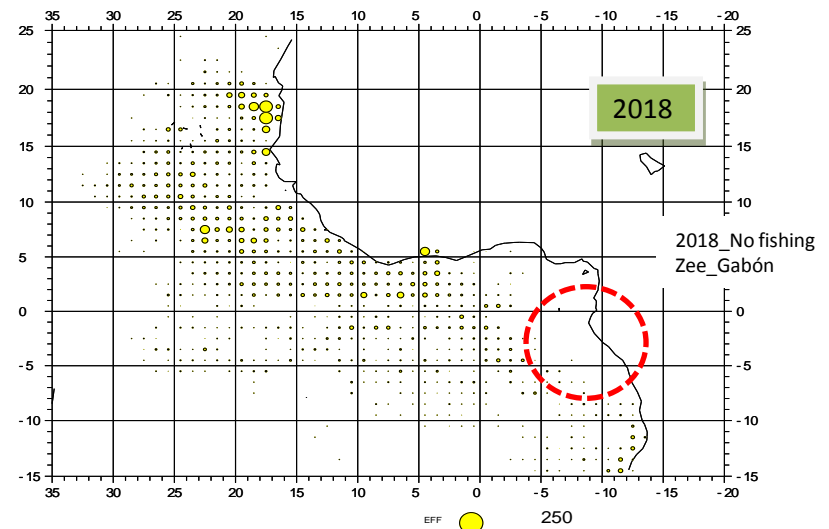


Efforts jmer AEPST111616



Efforts jmer AEPST111717

Year	Nº of Sets	Positive set	Null set	Average Catches by set (t)
2014	2153	1972	181	31,5
2015	2714	2455	259	26,7
2016	2716	2415	301	28,8
2017	2794	2609	185	26,1
2018	2529	2344	185	23,9



Efforts jmer AEPST111818

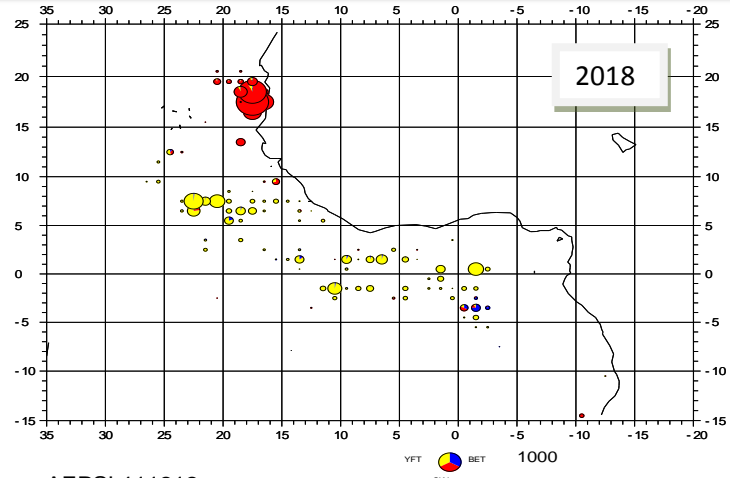
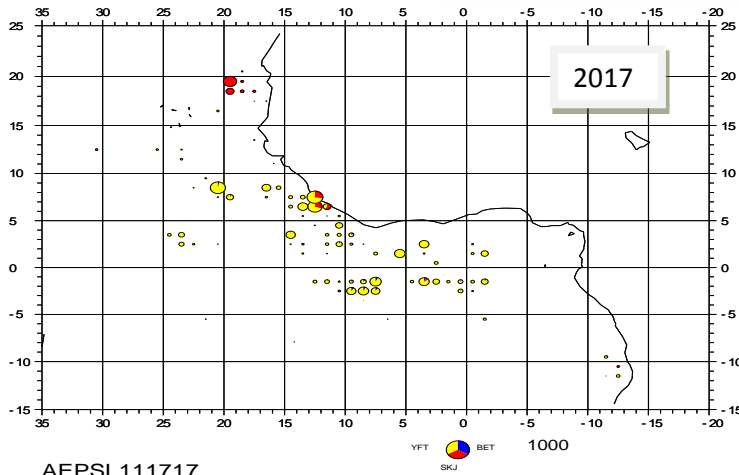
# STATISTICS OF THE SPANISH PURSE SEINERS

## Spatial Distribution , catches and number of set by type set in 2017/2018



### Free School

Spatial distribution of catches of yellowfin, skipjack and bigeye on free school.



AEPSL111717

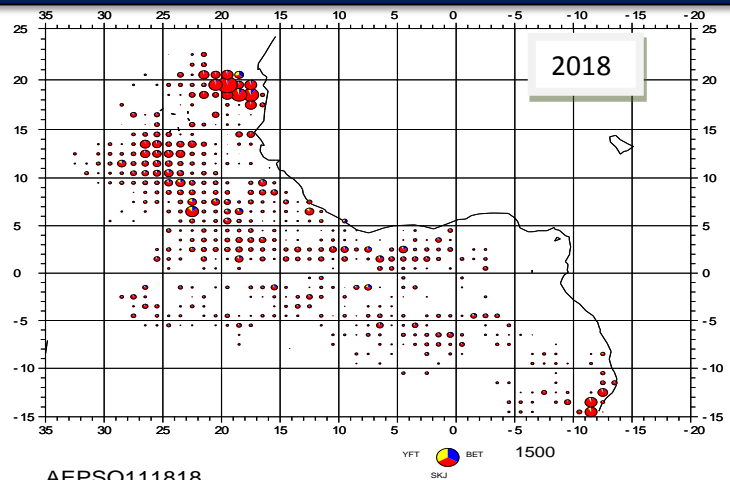
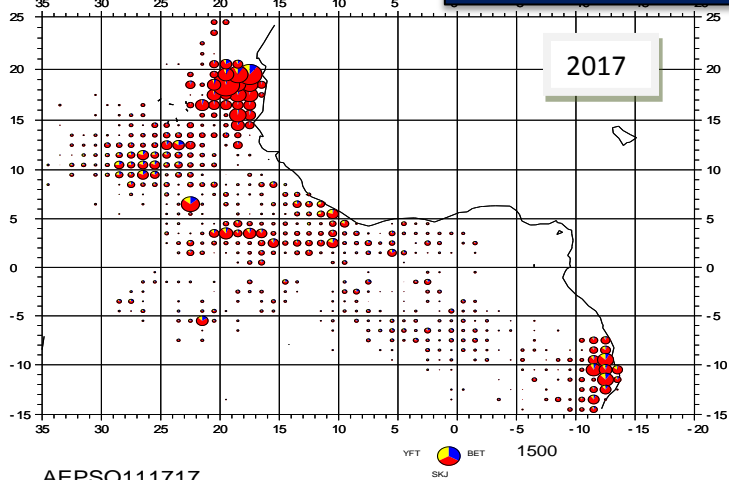
AEPSL111818

Year	Positive (OB)	Null (OB)	Average Cap. By Set+ (y)	Positive (FS)	Null (FS)	Average Cap. By Set+ (y)
2014	1508	44	34.8	464	137	20.8
2015	1759	37	26.3	696	222	24.5
2016	1770	77	29,8	645	224	25,9
2017	2305	75	25,9	304	110	21,1

2018    1824    34    23,1    520    151    26,9

### FAD

Spatial distribution of catches of skipjack, bigeye and yellowfin on FAD.



AEPSO111717

AEPSO111818



## MEASURES AND DATA SAMPLING





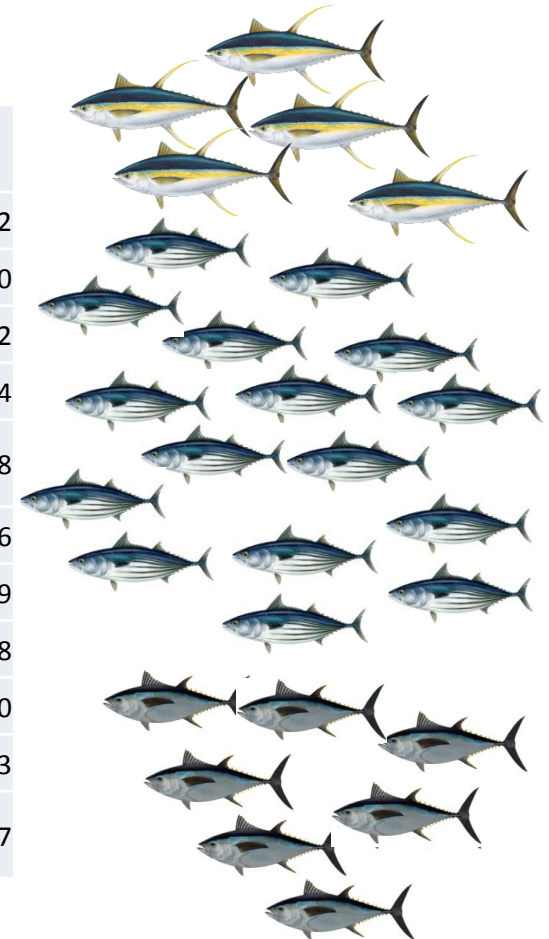
STATISTICS OF THE SPANISH PURSE SEINERS  
 Number measures by harbour, species and gear in 2018



ocean	flag	gear	year	nb_landings	nb_landings_with_samples	% coverage_samples
Atlantic	Espagne	BB	2018	161	106	65,84
Atlantic	Espagne	PS	2018	99	71	71,72

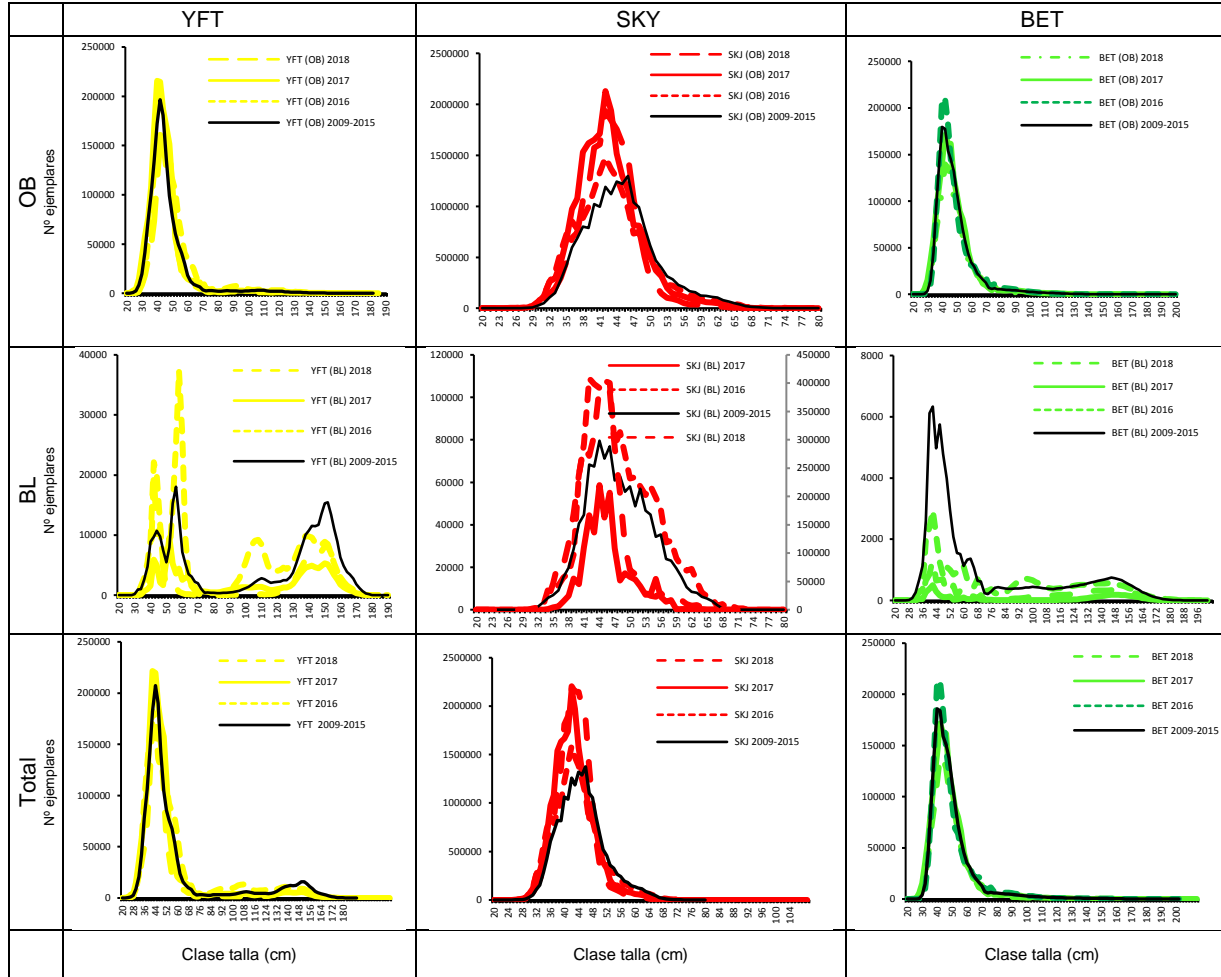


ocean	gear	year	species	nb_size_species	nb_count_species
Atlantic	PS	2018	Katsuwonus pelamis	36516	242272
Atlantic	PS	2018	Thunnus albacares	42872	43320
Atlantic	PS	2018	Thunnus obesus	21462	21462
Atlantic	PS	2018	Auxis thazard	13099	16064
Atlantic	PS	2018	Euthynnus alletteratus	2674	4268
Atlantic	PS	2018	Thunnus alalunga	76	76
Atlantic	BB	2018	Katsuwonus pelamis	10334	78479
Atlantic	BB	2018	Thunnus albacares	4815	5388
Atlantic	BB	2018	Thunnus obesus	4860	4860
Atlantic	BB	2018	Auxis thazard	563	563
Atlantic	BB	2018	Euthynnus alletteratus	181	547



# STATISTICS OF THE SPANISH PURSE SEINERS

## Number measures by harbour, species and gear in 2018



GEA R	YEA R	Fishing mode	Code _ESP	Range catch	Mode TL
PS	2018	OB	YFT	24 - 180 cm	42 cm
PS	2018	FS	YFT	32 - 184 cm	44, 53 y 148 cm
PS	2018	Total	YFT	42 - 150 cm	42 cm
PS	2018	OB	SKJ	22 - 69 cm	42 cm
PS	2018	FS	SKJ	31 - 70 cm	44 cm
PS	2018	Total	SKJ	22 - 70 cm	42 cm
PS	2018	OB	BET	22 - 172 cm	42 cm
PS	2018	FS	BET	32 - 202 cm	42 y 146 cm
PS	2018	Total	BET	22 - 202 cm	42, 146 cm

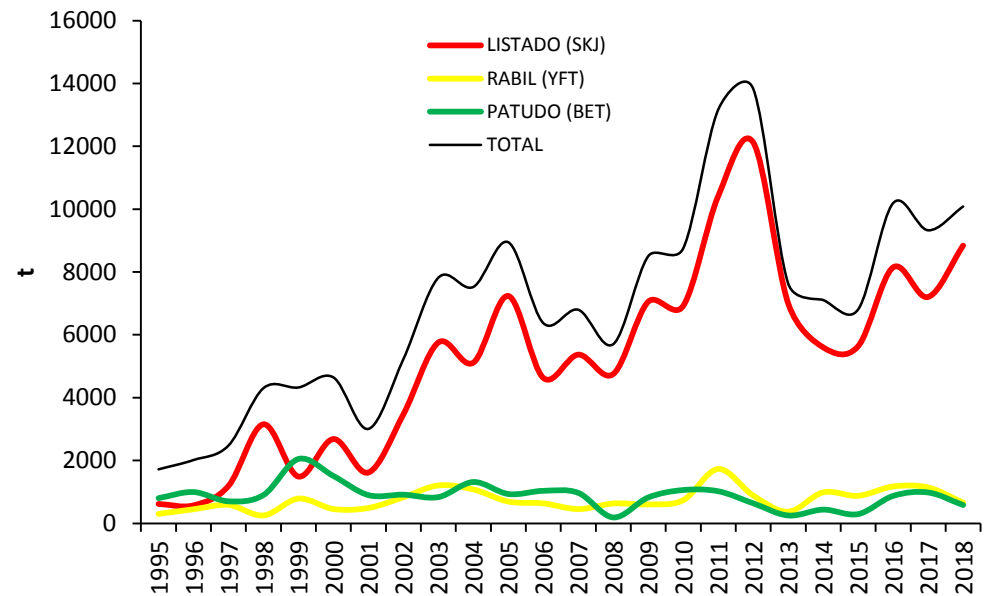
# Spanish Bait Boat fleet in Dakar

## Historical catches by Specie and nº vessels and fishing days



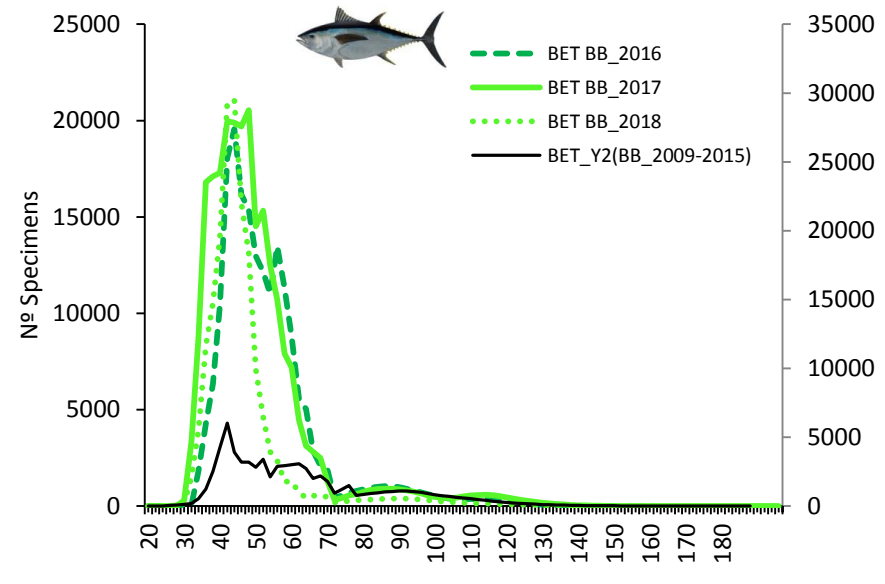
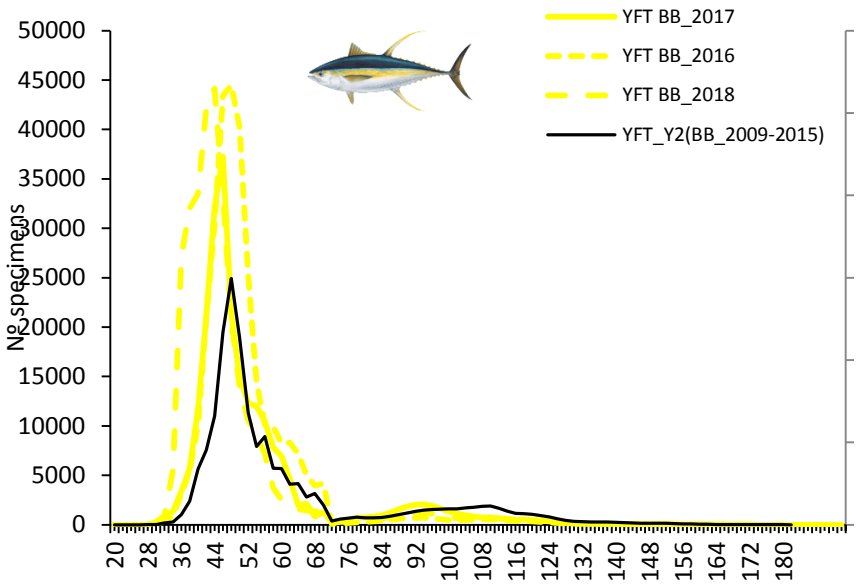
AÑO	RABIL (YFT)	LISTADO (SKJ)	PATUDO (BET)	TOTAL
1995	300	617	802	1719
1996	448	572	995	2015
1997	585	1191	701	2476
1998	251	3153	900	4304
1999	787	1488	2049	4324
2000	455	2683	1507	4644
2001	489	1618	898	3005
2002	830	3470	912	5228
2003	1207	5757	835	7819
2004	1079	5114	1315	7525
2005	692	7237	933	8946
2006	636	4628	1034	6372
2007	453	5370	969	6797
2008	632	4753	188	5704
2009	602	7055	824	8505
2010	736	6923	1060	8754
2011	1730	10417	1021	13168
2012	885	12124	637	13831
2013	371	6998	250	7629
2014	986	5601	436	7107
2015	876	5638	436	6807
2016	1172	8148	873	10192
2017	1142	7314	983	9438
2018	661	8840	582	10083

### Total catches

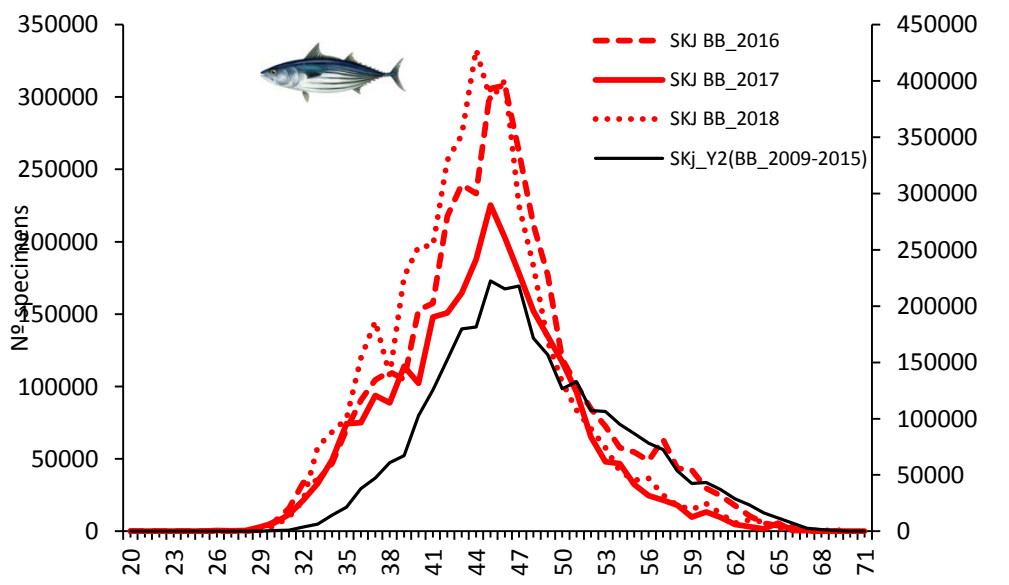


# STATISTICS OF THE SPANISH PURSE SEINERS

## Number measures by harbour, species and gear in 2018

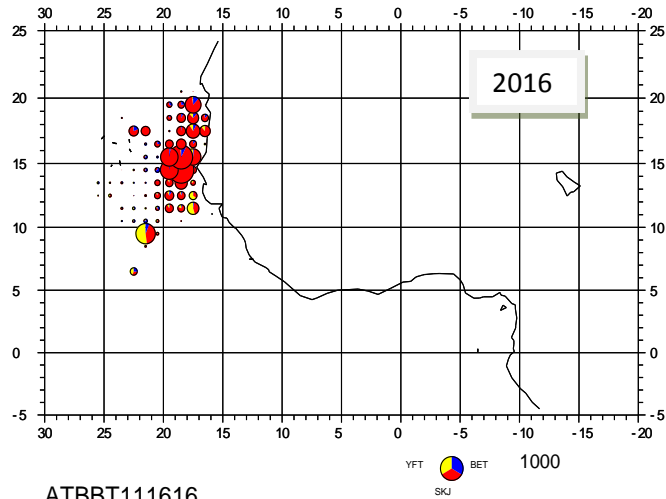


GEAR	YEAR	Fishing mode	Code_ESP	Range catch	Mode TL
BB	2018	Total	YFT	28 - 180 cm	46 cm, 110 cm
BB	2018	Total	SKJ	27 - 70 cm	44 cm
BB	2018	Total	BET	24 - 162 cm	44 cm

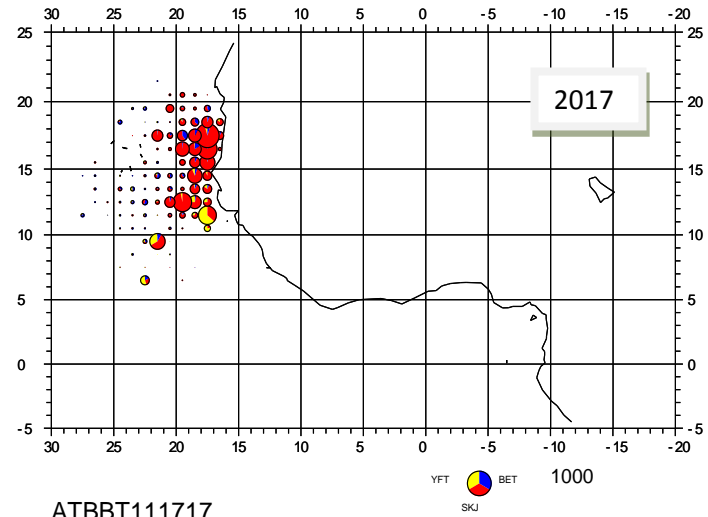




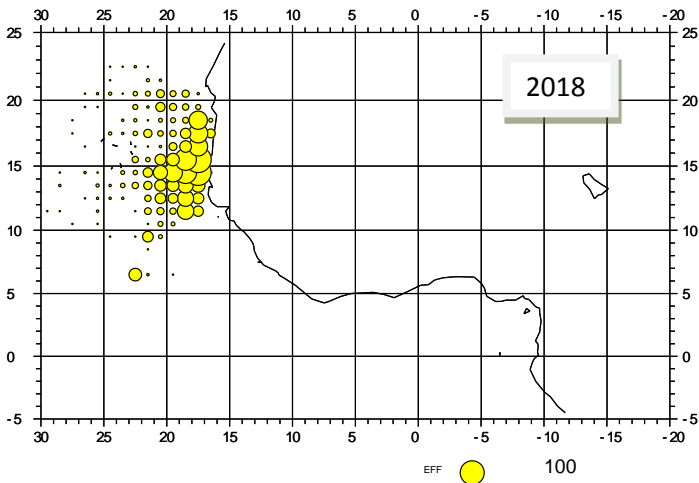
## Spatial distribution catches of skipjack, yellowfin and bigeye in



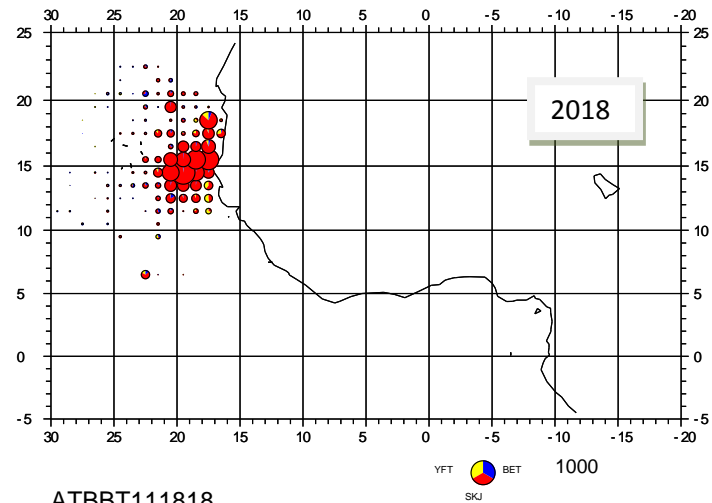
ATBBT111616



ATBBT111717



Efforts jmer ATBBT111818



ATBBT111818

*THANKS YOU FOR YOUR ATENTION*